

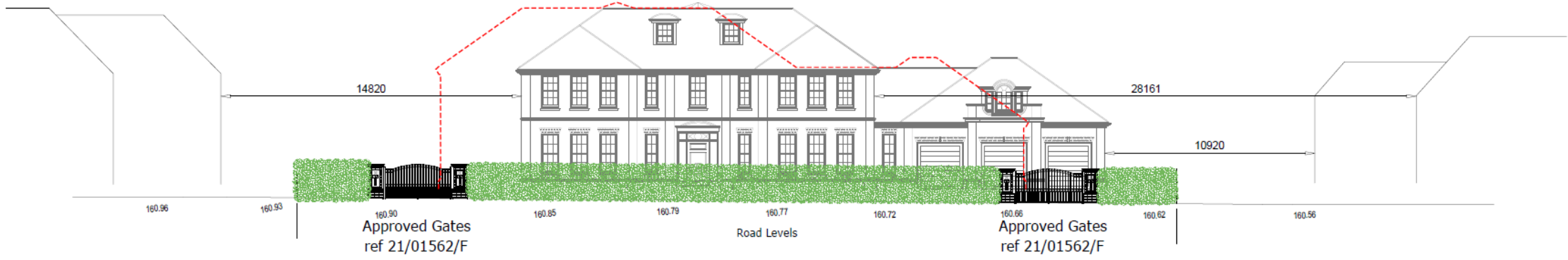


Approved House position
ref 21/01562/F

Approved New
Entrance & Gates

Approved New
Entrance & Gates

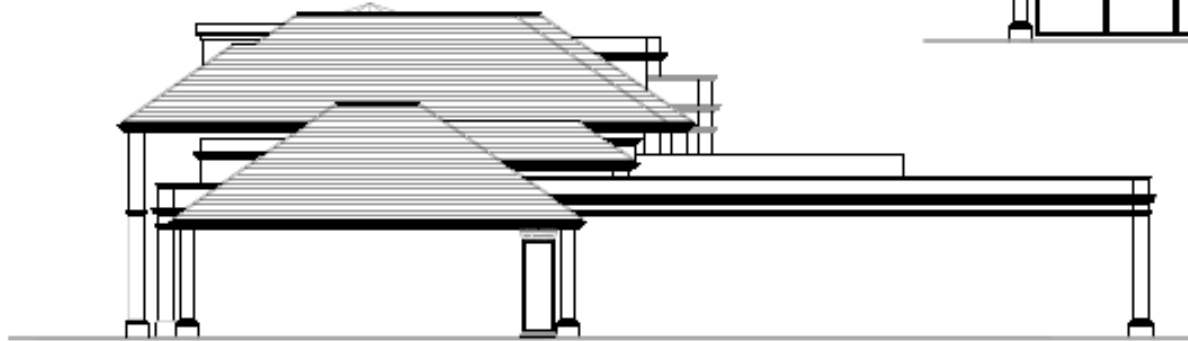
Approved House position
ref 21/01562/F



Street view from The Chase



Side Elevation



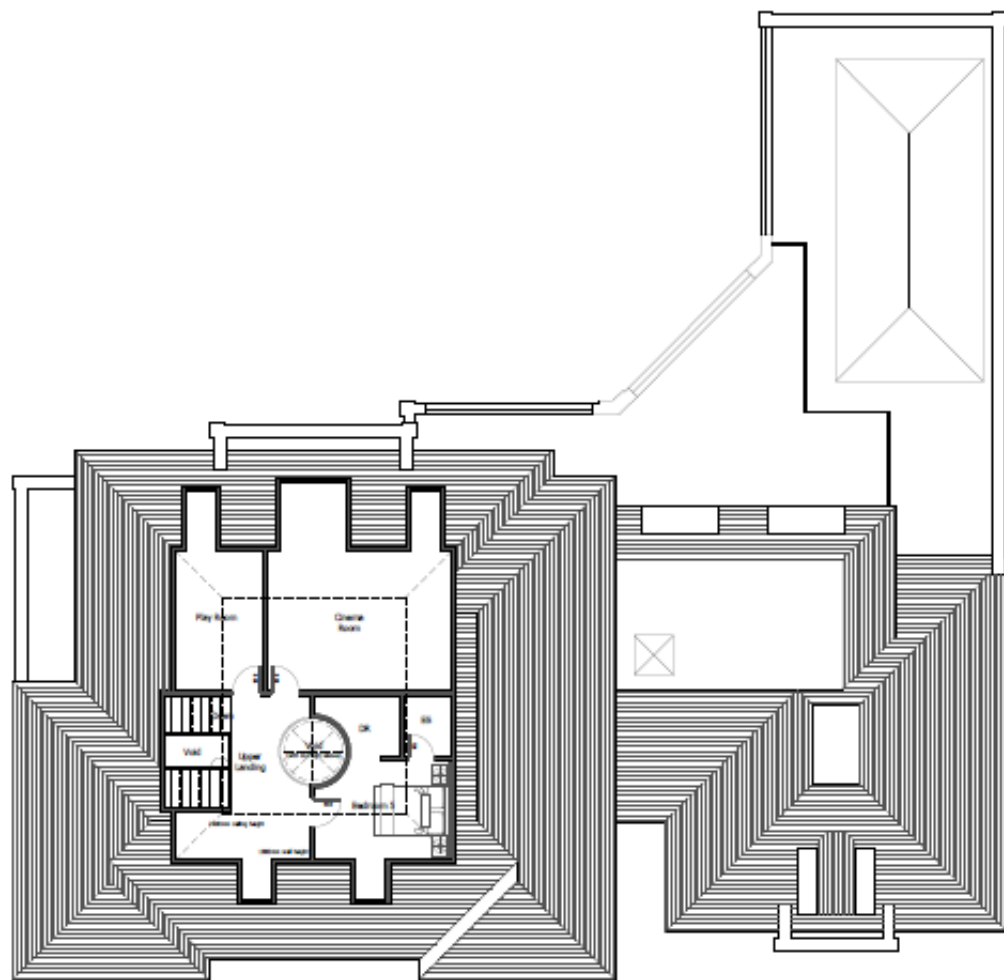
Side Elevation

Approved elevations from original permission

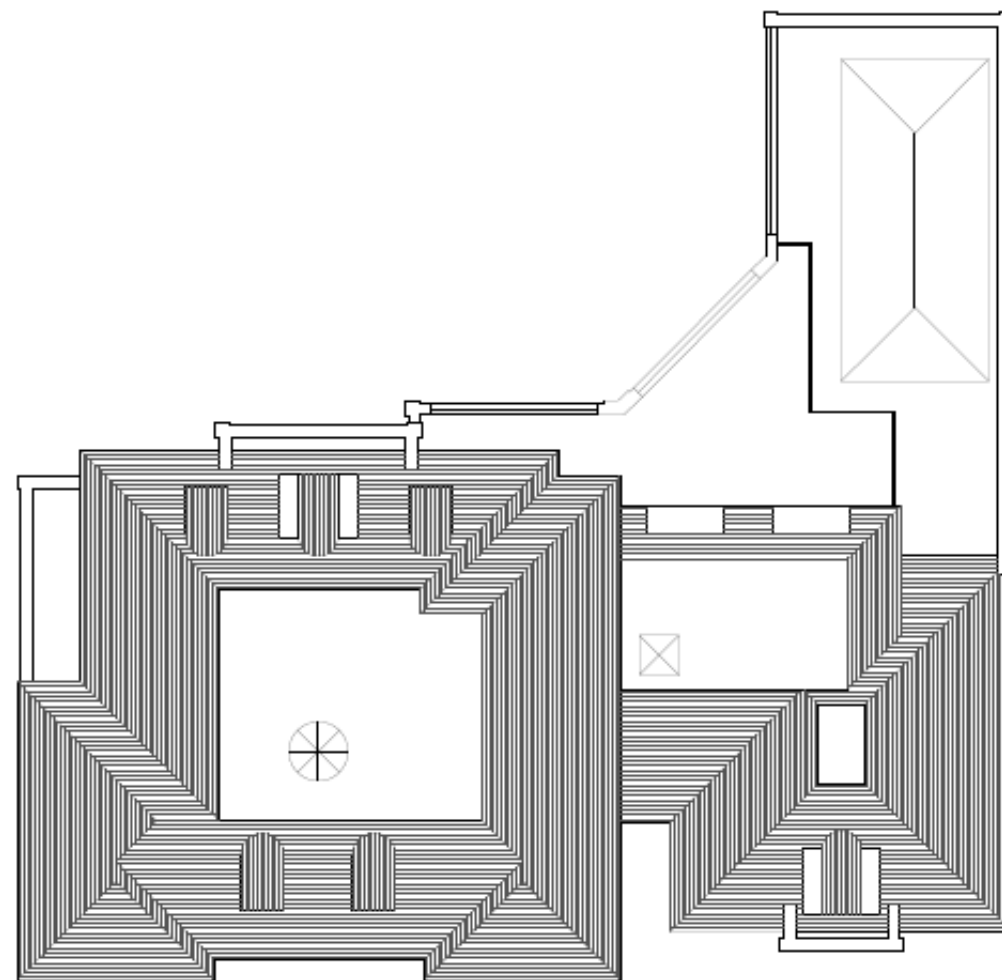


Rear Elevation

Approved floor plans from original permission



Second Floor
GIA - 87.7 m²



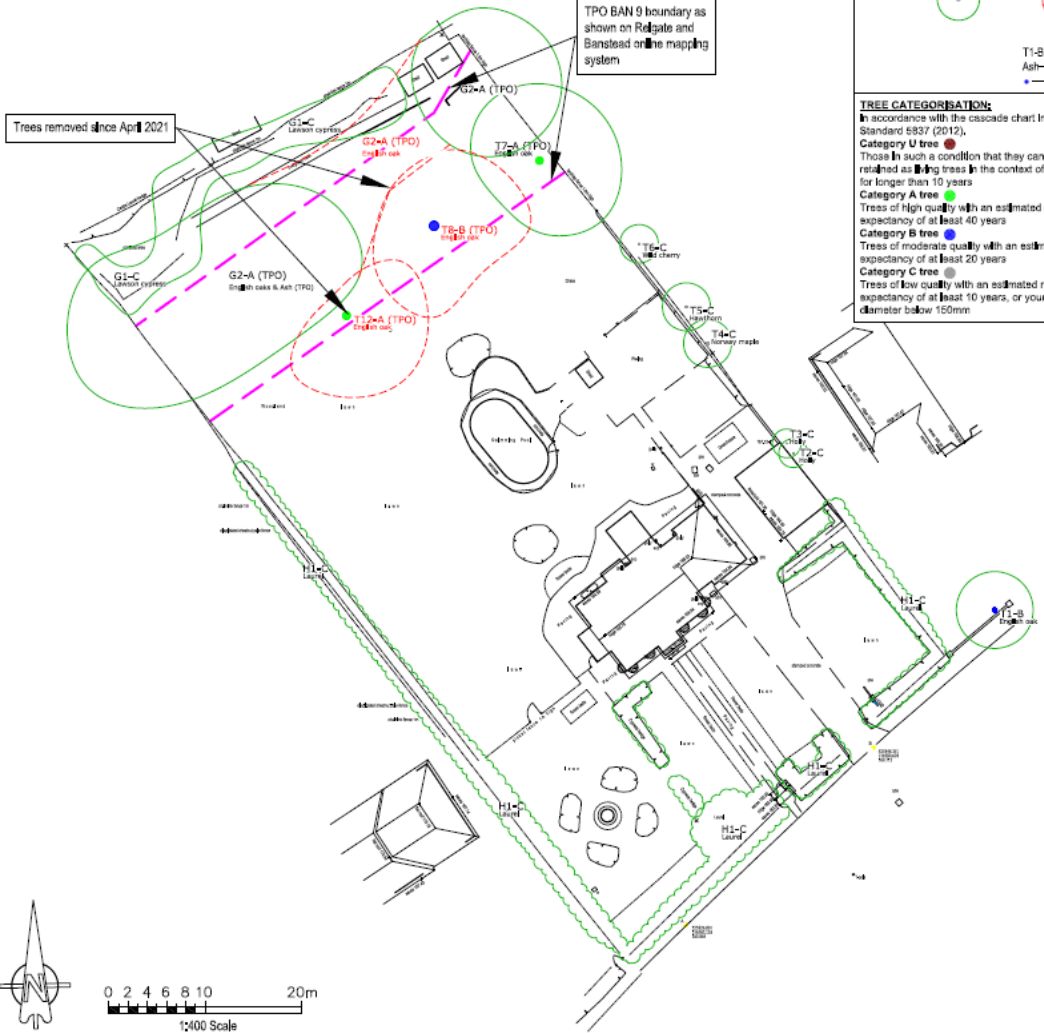
Roof
Total GIA - 969.0 m²

TREE SURVEY PLAN

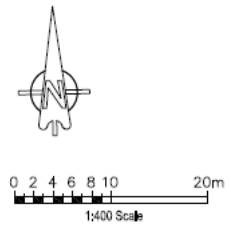
KEY:

- TREE TO BE RETAINED (Green circle)
- TREE REMOVED (Red circle)
- T1-B — TREE NO. & CATEGORY
- Ash — SPECIES
- Trunk — TRUNK

TREE CATEGORISATION:
 In accordance with the cascade chart in Table 1 of British Standard 5837 (2012).
Category U tree (U): Those in such a condition that they cannot realistically be retained as living trees in the context of the current land use for longer than 10 years.
Category A tree (A): Trees of high quality with an estimated remaining life expectancy of at least 40 years.
Category B tree (B): Trees of moderate quality with an estimated remaining life expectancy of at least 20 years.
Category C tree (C): Trees of low quality with an estimated remaining life expectancy of at least 10 years, or young trees with a stem diameter below 150mm.



TREE PROTECTION PLAN



KEY:

- ROOT PROTECTION AREA (RPA)
- T1-B — TREE NO. & CATEGORY
- Ash — SPECIES
- Trunk — TRUNK
- PROTECTIVE FENCING
- ABOVE SURFACE
- REPLACEMENT TREE







